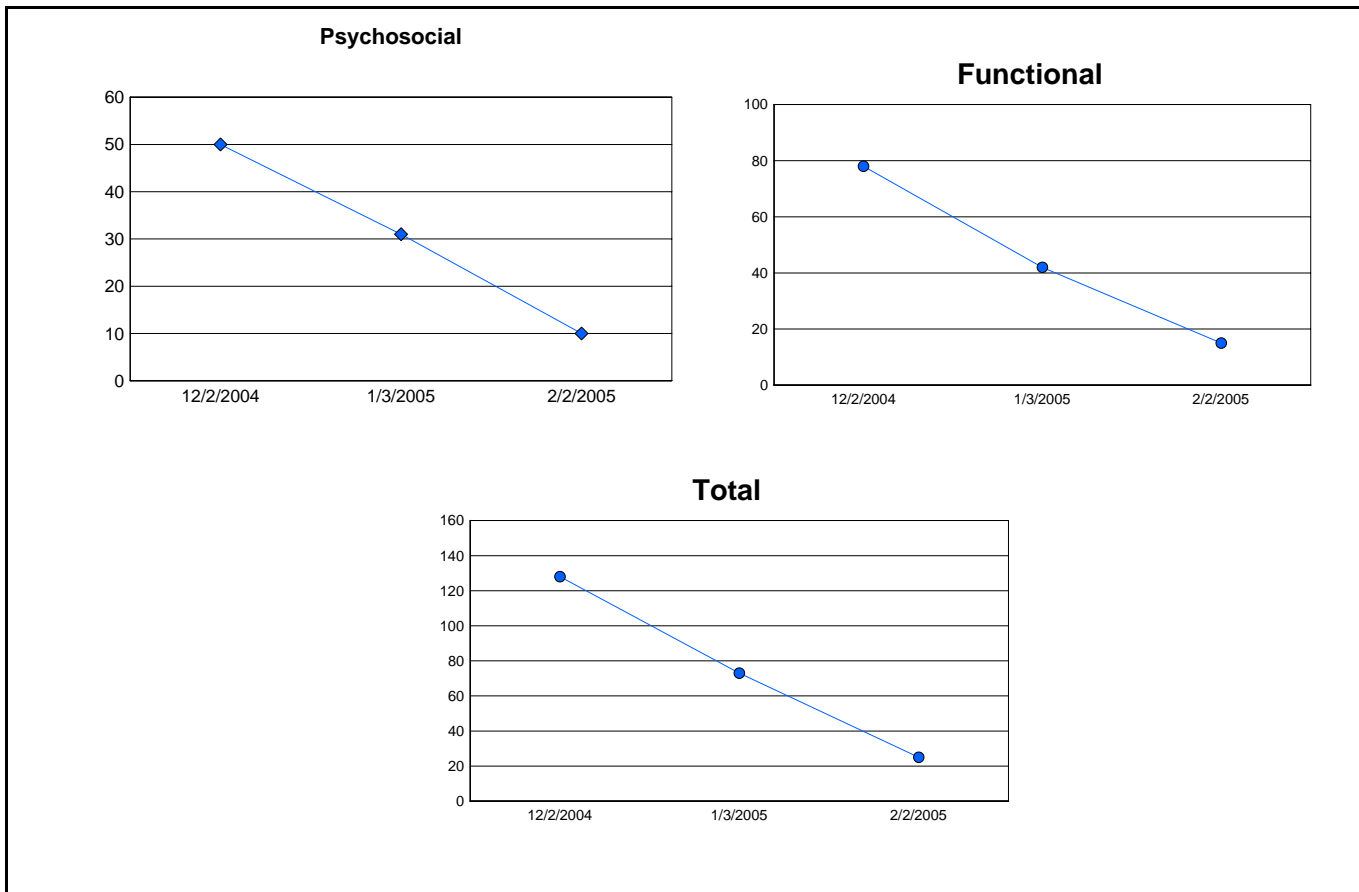


Outcomes Assessment Summary*

Patient Name: John Doe

Pain Disability Questionnaire

	<u>Psychosocial</u>	<u>Functional</u>	<u>Total</u>
Initial 12/2/2004	50/60	78/90	128/150
Interim 1/3/2005	31/60	42/90	73/150
Current 2/2/2005	10/60	15/90	25/150
Current Change	21.00	27.00	48.00
Overall Change	40.00	63.00	103.00



Interpretation:

Severity Total
 0 = No functional disability
 150 = Worst functional disability

* Procedural Protocols, Normative Data and Scoring Methodology contained in: Anagnostis C et al: The Pain Disability Questionnaire: A New Psychometrically Sound Measure for Chronic Musculoskeletal Disorders. *Spine* 2004; 29 (20): 2290-2302.

Outcomes Assessment Narrative Summary

Patient Name: John Doe

Diagnosis (ICDA): 846.0
Gender: Male
Age: 55
Date of Onset: 12/16/2004
Social Security # 555-44-3333
Claim # 654321
ID # WC12345

Assessment Tool: The Pain Disability Questionnaire

Introduction

The Pain Disability Questionnaire (PDQ) is a comprehensive psychometric evaluation of functional status (1). The focus is primarily on disability and function. This instrument is designed for the full array of chronic disabling musculoskeletal disorders, rather than low back pain alone. The psychometric properties of the PDQ are excellent, demonstrating strong reliability, responsiveness, and validity.

The PDQ is made up of two factors: a Functional Status Component comprising a maximum of a 90 score and a Psychosocial Component comprising a maximum of a 60 score. This yields a total functional disability score ranging from 0 to 150.

Patient Result

The Outcomes Assessment Summary lists the current total PDQ 'functional' score compared to 90, 'psychosocial' score compared to 60, and 'total' score compared to the worst possible score of 150.

Treatment Results

Follow up PDQ scores less than initial with the optimal total score 0/150.

Current Treatment Goals

The Outcomes Assessment Summary demonstrates the current score compared to the previous score. A **positive** CURRENT CHANGE number on the Outcomes Assessment Summary reflects health IMPROVEMENT from the previous assessment whereas a **negative** number reflects health WORSENING.

Overall Treatment Results

The Outcomes Assessment Summary demonstrates the current score compared to the initial score. A **positive** OVERALL CHANGE number on the Outcomes Assessment Summary reflects health IMPROVEMENT from the initial assessment whereas a **negative** number reflects health WORSENING.

References:

Procedural protocols, normative data and scoring methodology contained in:

1. Anagnostis C et al: The Pain Disability Questionnaire: A New Psychometrically Sound Measure for Chronic Musculoskeletal Disorders. *Spine* 2004; 29 (20): 2290-2302.

Total Number of Office Visits: 2 Total Costs at Discharge: \$350.00

* Procedural Protocols, Normative Data and Scoring Methodology contained in: Anagnostis C et al: The Pain Disability Questionnaire: A New Psychometrically Sound Measure for Chronic Musculoskeletal Disorders. *Spine* 2004; 29 (20): 2290-2302.